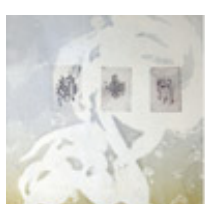


**October 31 is the postmark deadline for exhibitions for 2010.**

To exhibit at Bunnell in 2011, send a statement for the intended exhibit, 5 images on a CD with an image identification sheet and your resume or bio. We do not accept applications by email. You can learn about exhibiting at Bunnell Street Arts Center, membership and Artist in Schools with the "Quick Links" tabs to the right. Forward this newsletter to a friend or unsubscribe easily by following the links. *Thank you* for your support!

**October 2 - November 4, Gretchen Sagan, "Scratch Game"**



Opening This Friday Oct. 2, 5-7pm, Talk at 6pm. In her new show of prints and sculptures, Gretchen Sagan asks: "What lies beneath the surface? Overwhelmingly, the odds are against us but at the same time we are compelled to take a chance. *Scratch Game* explores the spectrum of emotion that is created just before a simple movement uncovers what was hidden. The games offer varying prizes and come in a variety of sizes and shapes. These revealing moments can be victorious or disappointing. But to win one must take the risk, and as with personal relationships the discovery can be rewarding or come to nothing." (detail shown)

**October 3: The Big One, 7 pm at the Pratt Museum**



Cyrano's Theatre Company, of Anchorage, presents a dramatic story about Black Gold and Alaska.... individuals on the fault-line between corporate capitalism and Earth-stewardship. *The Big One: A Chronicle of the Exxon Valdez Oil Spill*, by Dick Reichman. Traveling to Homer for one night only! Sponsored by Pier 1 Theatre, the Pratt Museum and Bunnell Street Arts Center. Admission: \$10. Read more at [cyranos.org](http://cyranos.org)

**October 16th-18th: "The Thank-You Bar" by Catalyst**

"..fresh and fierce, evocative and disciplined." - Dance Magazine 2005



Alaska Grown/Minneapolis-based choreographer Emily Johnson brings to Homer a contemporary work of dance, live music, storytelling and visual image. "THE THANK YOU BAR" explores the question "What is a true home?"- a question central to anyone displaced from a physical or cultural home, as Johnson, who is of Yup'ik descent, has been for the past 15 years. The piece is performed by Emily Johnson with live music by Blackfish composers James Everest and Joel Pickard and includes work by visual artists as well, Kari Multz from Homer among them. Designed for a limited audience of 30, Johnson's partly-true stories explore ideas of displacement, longing, and language. [Read an interview](#) with Emily about growing up on the Kenai Peninsula, her dance and choreography work and this piece. The dance performance is followed by an improvised blues inspired music concert by [Blackfish](#). Shows Friday and Saturday at 8pm with Blackfish concert following at 9:15. Tickets \$15, seating is limited, call early. Sunday, Blackfish concert at 8pm, Tickets \$15.

**October 23 and 24: Jazzline Dance at the Mariner Theater**

Shows Friday at 7pm, Saturday at 3pm and 7pm.



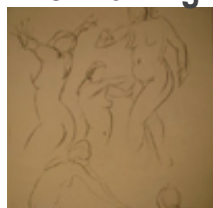
Bunnell Street Arts Center presents *Jazzline*, Jocelyn Shiro-Westphal's 9th annual choreographed performance featuring the incredible talents of Homer youth and adult dancers. This year's outstanding performance includes Broadway-inspired musicals, a Michael Jackson montage, the Spirit of the Drum dance and numbers from the

Phantom of the Opera. Jocelyn's *Jazzline* is a celebration of community talent and commitment. Proceeds benefit Bunnell's Artist in Schools and Summer Arts Camp programs. These shows sell out to standing room only, purchase tickets early!

Tickets: \$8-youth 18 and under/\$12 Bunnell members/\$15 general available at the Homer Bookstore and Bunnell.

**Two Weekends of Dance Special! Purchase a combined ticket for both The Thank-You Bar and Jazzline for only \$20 per person only at Bunnell Street Arts Center.**

**Life Drawing Group Resumes October 20, 6:30 to 9 PM**

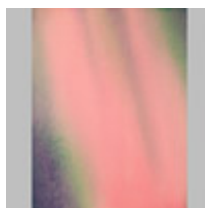


Anyone can join Homer's Life Drawing Group! Draw from a live model in the quiet atmosphere of Bunnell's main exhibit gallery. Life Drawing meets this winter on Tuesday evenings, starting October 20, from 6:30 to 9 PM. Bring your own drawing supplies - no instruction is provided. Drawing horses and tables and chairs are provided. \$7 is requested to help pay for the model. Participants must be current members of the gallery at the \$30 Individual level or higher. Its easy-- click on the membership link in in the right column of this newsletter or stop by Bunnell. For more information about Life Drawing Group or to learn about modeling (models are needed!) please call Gaye Wolfe at 235-7696.

**Rent Bunnell's gallery space for your Holiday party!**

Bunnell Street Arts Center provides a great space for private parties, meetings, receptions and events. We're stocked with tables and chairs, table cloths and wine glasses, and Maura's next door provides terrific catering! Call us for details: 235-2662

**Coming up in November**



**November exhibit:** James Belhke, paintings and Mary Ver Hoef, paintings.

**Jo's Trunk Show in Anchorage.** Bunnell goes on tour and brings a large selection of art, jewelry, paintings, pottery and other wonders to Jo Michalski's marvelous home in Anchorage. Just in time for the holidays! A great time to renew your membership. Work by Sonya Kelliher Combs, Ann-Margret Wimmerstedt, Kathy Smith, Kathryn Carovano, the late Alex Combs, Deland Anderson, Judy Winn, Antoinette Walker, Turid Senungetuk, Linda Infante-Lyons, Rika Mouw, Sara Tabbert, Asia Freeman and Michael Walsh and more. Delightful day of art and wonder in a beautiful Anchorage setting.

**Donating to this non-profit**



Bunnell is registered as a recipient for the State of Alaska's PFD Charitable Contributions Program. Designate a portion of your \$1305 windfall to the non-profit of your choice this January. Its as easy as "Pick.Click.Give."

*Limited cash flow but an abundance of art?* Donate a painting to one of Bunnell's annual auctions. Your donation can fund a number of programs or operations. Your donation goes beyond just supporting Bunnell. Your donation supports Alaska artists, children of all ages, this community and an environment of artistic exploration.

*And we value your time too!* We always have a need for gallery hosts. Volunteer today, spend a Saturday afternoon with art and friends in the light-filled gallery in Old Town Homer. Sign up to host evening events for free admission.

[Join Our Mailing List!](#)

**Quick Links**

- [Apply for a Show](#)
- [Artist in Schools](#)
- [Membership](#)

**October Calendar**

(all events at Bunnell unless indicated)



**Gretchen Sagan**  
Exhibiting Artist  
Prints and Sculptures  
Oct.2-Nov. 4

**The Big One**, a play  
October 3  
Pratt Museum

**The Thank-you Bar** Dance  
Performance/ Installation  
followed by Blackfish concert.  
October 16 & 17

**Blackfish**  
Improvisational pedal steel  
and acoustic guitar concert.  
October 18

**Life Drawing**  
Tuesdays starting October 20

**Jazzline**  
Oct. 23, 7pm  
Oct 24, 3 & 7pm  
Mariner Theater

**Exhibition Proposals  
Deadline Oct 31st**

**Next Month at Bunnell:**  
Mary Ver Hoef and James  
Behlke  
Exhibiting Artists  
Nov. 6-Dec. 2

Jo's Trunk Show in  
Anchorage Nov 22